



shredding technology

The reliable brand!

LR520



LR520

COMPACT AND RELIABLE

The LR520 wood shredder is a single-shaft shredder specifically designed for joineries and wood working companies with a waste wood volume of less than 3 m³ per week. Thanks to its pusher-free design, this low-maintenance wood shredder has a very small footprint.

The low drive power as well as the integrated shut-down function when idling significantly decrease energy costs. The powerful drive concept in combination with UNTHA's tried-and-tested cutting system provide for a reliable shredding process. The wood chips are either discharged via an integrated discharge screw or an external extraction device.

Powerful technology combined with well-known UNTHA quality features turn the LR520 not only into the most reliable wood shredder of its kind but also the most cost-effective one.

TYPICAL APPLICATIONS

▪ Laminated wood panels ▪ OSB ▪ Chipboard ▪ MDF ▪ Hard and soft wood ▪ Veneers ▪ etc.

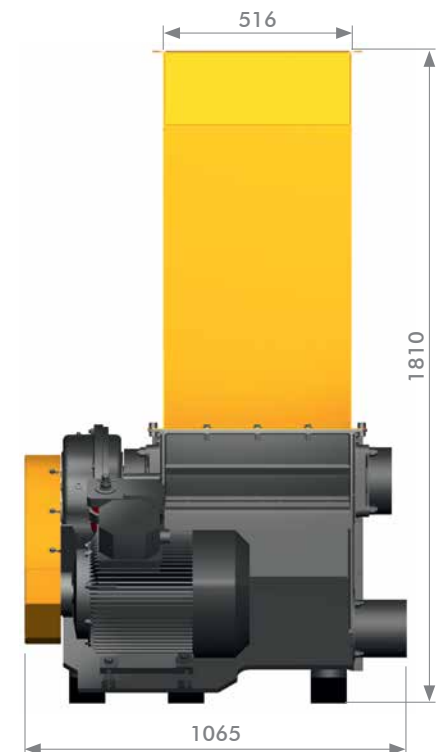
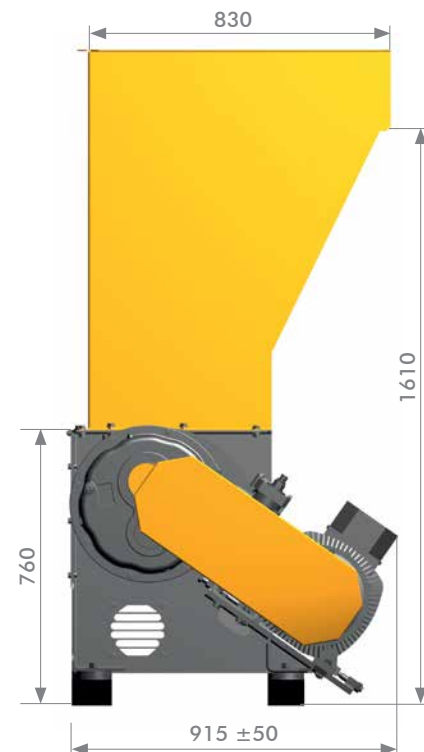


LR520

1-shaft cutting system

TECHNICAL DATA		LR520
Power	kW	1 x 11
Rotor Ø	mm	248
Rotor speed	rpm	85
No. of indexable inserts	units	14
Charging hole	mm	516 x 830
Extraction connector Ø	mm	160
Required extraction speed	m/s	22
Weight	kg	appr. 850
Noise level pressure LPA1m	dB (A)	82
Perforated screen Ø	mm	12 - 25
Throughput**	cbm	appr. 0.5 - 1

***) depending on: quality of material and diameter of perforated screen
All dimensions in mm



40 years of expertise.
more than 9,000 shredders in daily operation!



QUALITY FEATURES

Rugged and economic cutting system

- > large rotor diameter (248 mm) and large screen surface ensure high throughput
- > effective and automatic drawing-in of material
- > threaded and exchangeable cutter holders with multiple-use indexable cutters
- > tried, tested and proven UNTHA LR cutting system

Pusher-free design

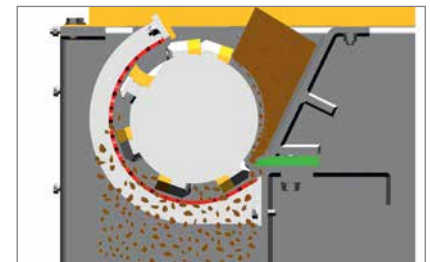
- > no hydraulics required
- > compact and space-saving design
- > ensures trouble-free operation
- > long service intervals

Trouble-free drive concept

- > high availability and trouble-free operation thanks to powerful drive concept including gearbox damping system

Simple operation and well-planned control system concept

- > automatic detection and shut-down system for nonshreddable items
- > automatic reversing function for motor overload conditions
- > operator-friendly control device on the control cabinet
- > automatic shut-off when idling



*) or 2,000 h, whichever value occurs first



Options

- > discharge screw conveyors
- > pipe magnets
- > belt conveyors with magnetic separation

UNTHA CUSTOMER SERVICE – AS RELIABLE AS OUR PRODUCTS

Our customers' satisfaction is our number one priority. Our experienced Customer Service experts make sure the machines and plants supplied by us are maintained and optimized to increase their service life and ensure efficient and profitable operation.

For more information please refer to our Customer Service brochure.

HOW UNTHA CUSTOMER SERVICE CAN BENEFIT YOU

Cutting systems overhaul

- > the low-cost alternative to buying new cutting systems
- > extension of service life and increase in productivity of used cutting systems
- > optimisation of worn cutting systems

Spare parts

- > original UNTHA replacement parts for maximum availability of your machine and plant
- > comprehensive spare parts stock of more than 10,000 items
- > replacement parts are provided within two working days thanks to our advanced logistics concept¹⁾
- > all original UNTHA replacement parts are "made in Austria"

Repair

- > short response time and expert support in emergencies
- > service hotline
- > highly qualified and experienced service engineers
- > general overhauls on site and at the UNTHA Service Centre

Preventive maintenance and maintenance agreements

- > UNTHA quality maintenance programmes ensure high up-time of machines
- > regular UNTHA quality maintenance ensures high performance of the machine
- > clear reduction in operating and maintenance costs
- > modular UNTHA quality Maintenance Agreements available

Training

- > expert training courses for optimum operation and maintenance of machines
- > hands-on and multimedia courses for immediate, positive training results
- > individual training courses and on-site advice available

Diagnosis of machine problems

- > prevention of serious damage
- > evaluation by means of state-of-the-art diagnostic equipment
- > remote diagnosis via GSM modem for swift troubleshooting

¹⁾ applies to all articles in stock



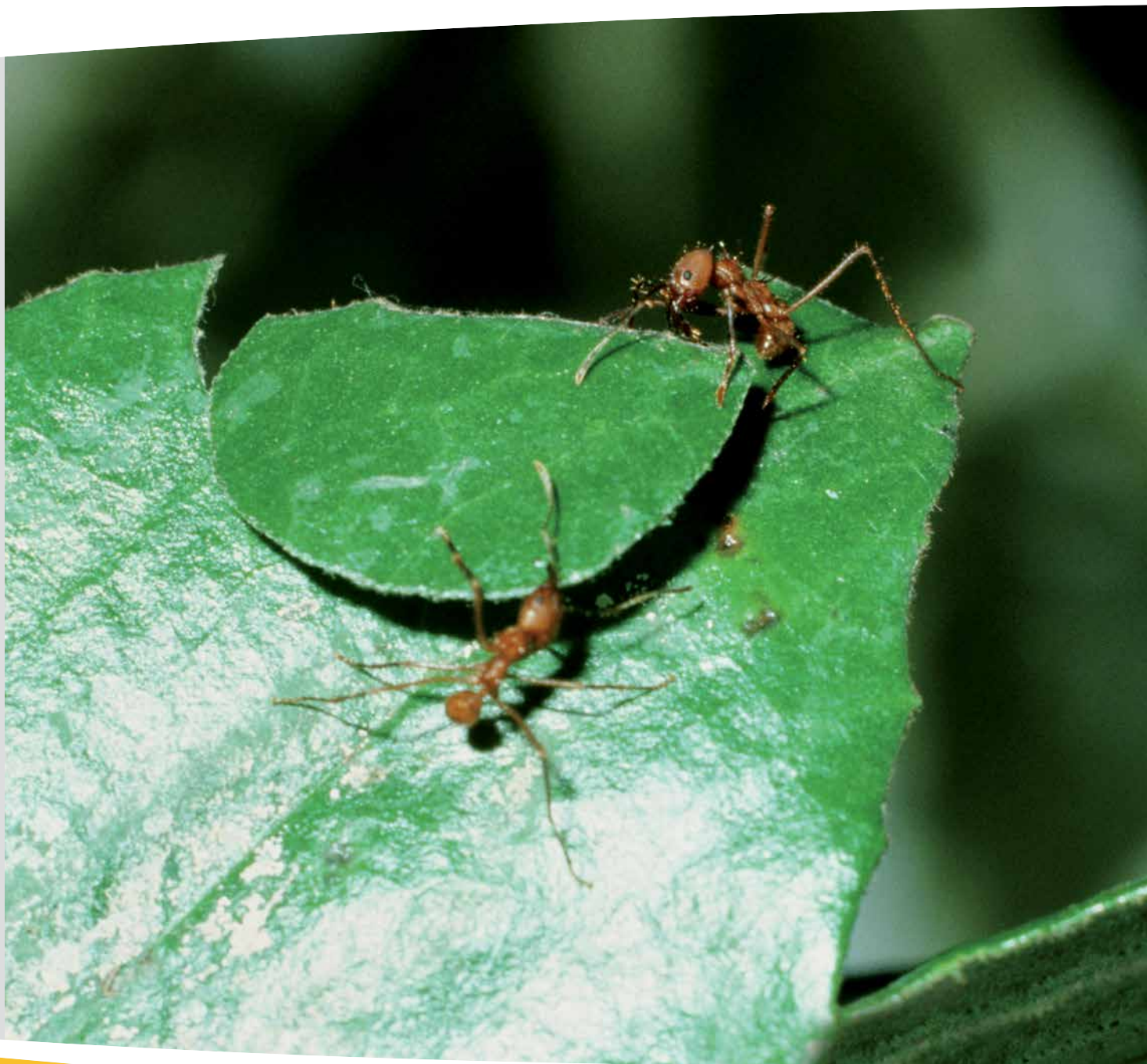


OUR MISSION

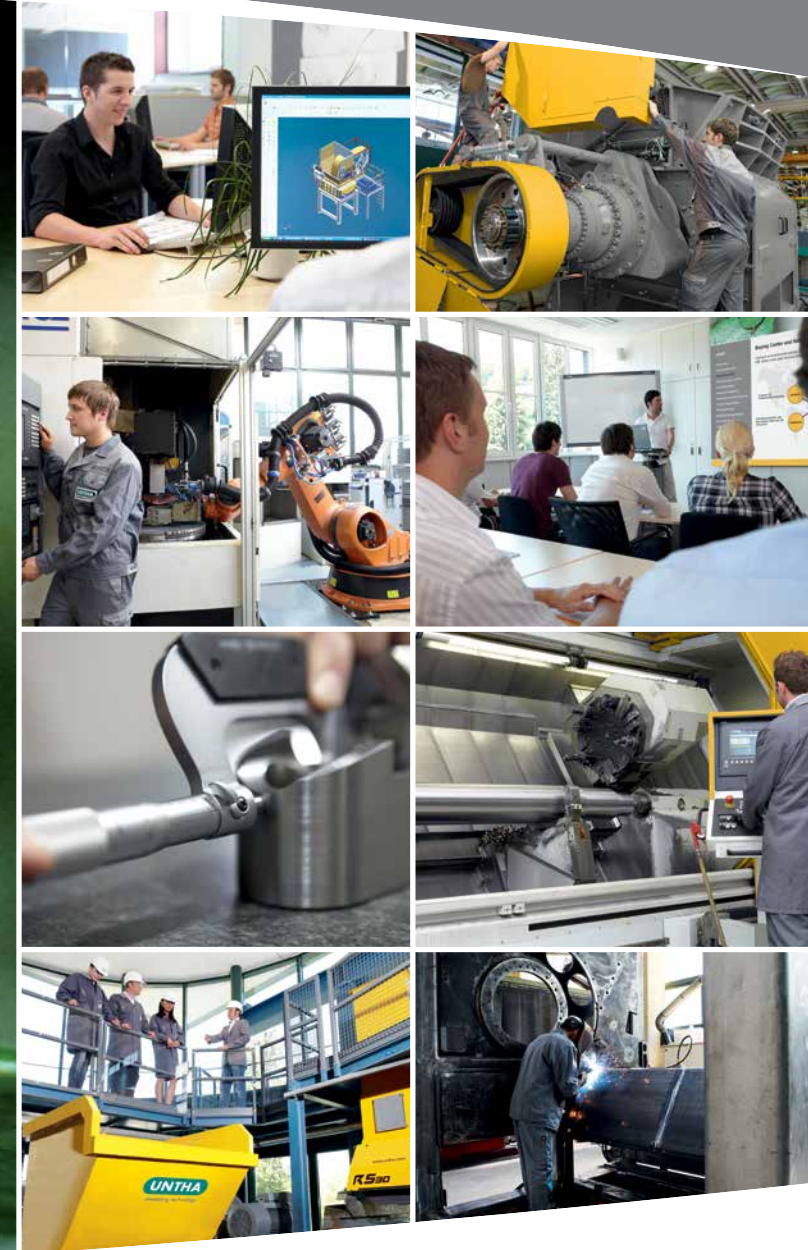
We have been a reliable and expert partner in the shredding industry for more than 40 years. Based on the latest technologies and with the help of our highly qualified staff, we develop and produce innovative and tailored shredding solutions for all applications.

Our every thought and action revolve around our customers and markets. We provide outstanding products and services of the highest quality and reliability and are therefore able to strengthen our customers' market position.

For us, reliability, credibility and a sound approach to business in both practice and theory are the central values that make our success in international markets possible. These values increase our competitiveness and help us to focus on our core competences and on the ongoing improvement of our business processes. The prerequisites for our success are innovative strength, problem-solving skills and our distinctive quality thinking.



THE FACTS SPEAK IN OUR FAVOUR





shredding technology

The reliable brand!



UNTHA shredding technology

Kellau 141
A-5431 Kuchl / Salzburg, Austria
Tel +43 6244 7016 0
Fax +43 6244 7016 1
info@untha.com
www.untha.com



Authorised partner of UNTHA



ReTec Miljø ApS
Fjordagervej 38
DK-6100 Haderslev
Tel: +45 7456 8106
www.retec.dk

ReTec Miljö AB
Kolonivägen 65
SE-371 54 Karlskrona
Tel: +46 (0) 479 130 30
www.retecmiljo.se



All revisions reserved. Subject to setting and printing errors.
All illustrations are representative and may deviate from the actual product.
© 03/14 UNTHA shredding technology